

**ALSA is asking for YOUR support...** The ALSA farmers are committed to using sustainable agricultural practices and caring for the Manupali watershed. The local government has adopted the developed co-investment scheme through a local resolution. But we need more help.

The protection of the watershed does not only depend on the farmers, **but also on YOU.**

**Water users** in and around the watershed **can help them by investing in ALSA activities**, such as practicing sustainable agriculture and monitoring the watershed.

### Funding Requirements for ALSA Sustainable Management Co-Investment Program

Management Focus	2017	2018	2019	2020	2021	TOTAL	%
Environment	7,482,725	2,734,700	2,662,200	2,662,200	2,662,200	18,204,025	24.7%
Livelihood	12,854,105	6,444,380	5,871,630	5,436,630	5,436,630	36,043,375	48.9%
Governance	5,103,130	2,739,630	2,739,630	2,739,630	2,739,630	16,061,650	21.8%
Education	116,000	1,566,000	116,000	116,000	116,000	2,030,000	2.8%
Health and Sanitation	103,675	531,425	531,425	96,425	96,425	1,359,375	1.8%
<b>TOTAL</b>	<b>25,659,635</b>	<b>14,016,135</b>	<b>11,920,885</b>	<b>11,050,885</b>	<b>11,050,885</b>	<b>73,698,425</b>	<b>100.0%</b>

Average of  
PhP147,396/hectare/year

PhP 736,984/hectare  
for 5 years

### Key activities

- Adoption of climate-smart, tree-based agricultural practices
- Adoption of backyard, organic livestock production and CSA practices, as alternative livelihood options
- Quarterly monitoring and evaluation of watershed biodiversity, resource utilization and CSA adoption
- Build support infrastructures for conducive learning

**FOR MORE INFORMATION or A COPY OF THE FULL BUSINESS CASE, contact:**

Mr Norberto Contreras, Jr.  
President, ALSA  
09068889781

Ms. Cecille Egnar  
Bukidnon Environment and Natural  
Resources Office  
cecille\_egnar@yahoo.com

# IT'S TIME TO INVEST IN THE MANUPALI WATERSHED!

Capitalizing on sustainable watershed  
management is good for the environment  
AND your business.





## What is happening to our water resources?

Companies and communities sourcing their water from the Manupali Watershed have to deal with water security issues brought about by:

- increasing population,
- continued expansion of agri-business companies and
- increasing number of water user groups.

The increase in demand for water puts a huge pressure on water resources.

In addition, changes in rainfall and temperature brought about by climate change show reduction not only in surface water flow, but also underground water supply, especially during the dry season.

## What do we want from the Manupali Watershed?

- Clean and sustainable resources, which provides for and protects the well-being of everyone.
- Maintained water supply, especially with climate change.

## What do we need to do to protect the Watershed?

- Expand forests
- Employ sustainable farming practices, such as agroforestry
- Improve watershed management services

## What is PES and how can it help?

**Payments for Ecosystem Services (PES)** is “a cost-effective means to improve environmental livelihoods by rewarding people for their efforts in providing ecosystem services, such as watershed protection and soil stabilization.”

## Co-investment as a PES paradigm

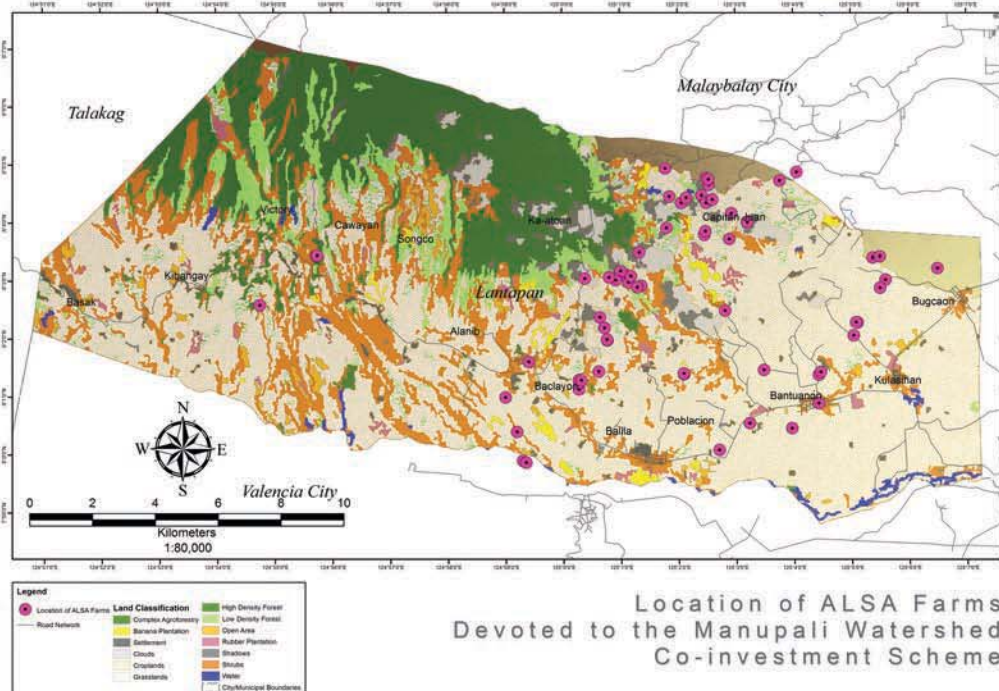
Co-investment entails rewards that are not market-driven, involving flexible contracts entrusting resource management and monitoring with local communities.

## Through a PES/co-investment scheme, the Association of Lantapan Sustainable Agro-ecological Zone (ALSA)\* proposes to:

1. Devote approximately 100 hectares of farmland and their efforts to sustainable farming practices.
2. Initiate sustainable watershed management in cooperation with different stakeholders of the Manupali Watershed.

To facilitate the implementation of the co-investment scheme, a business case was developed by ALSA with assistance of the World Agroforestry Centre (ICRAF), through the Climate-smart, Tree-based, Co-investment in Adaptation and Mitigation in Asia (Smart Tree-Invest) project. This was supported by the International Fund for Agricultural Development and the CGIAR Research Program on Forests, Trees and Agroforestry.

\*ALSA has been registered with the Securities and Exchange Commission since 1997. With over 200 active members, the association covers the whole municipality of Lantapan in Bukidnon and grows mainly corn, coffee, vegetables, banana and livestock.



## The Co-investment Vision

*“A healthy Manupali Watershed that equitably provides the needs of its peoples, managed with respect to diverse cultures through the cooperation and to the mutual benefit of providers and beneficiaries of ecosystem services.”*

