

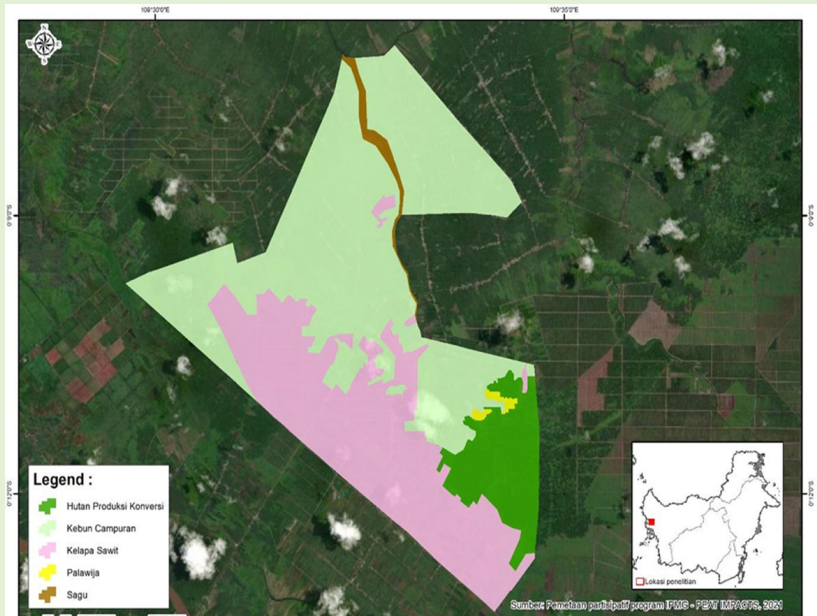
Business model for improving management of rubber-coffee agroforestry on peatlands in Bengkarek Village, Sungai Ambawang Subdistrict, Kubu Raya District



© World Agroforestry (ICRAF)

Bengkarek Village is located in the Kapuas-Ambawang River Peat Hydrological Unit (PHU). Four of seven sub-villages are covered by peatland up to 2 m depth. Motorcycle and boat are transportation modes to access the village.

- Agroforestry system of rubber-coffee-pepper dominant landcover in Bengkarek, that mostly grow in mineral soil. While annual crop grow in peatlands area.
- Oil palm plantations, managed under plasma scheme by three companies are the second largest land cover in the village.
- Secondary forest of approximately 600 ha available in the village.
- Low price of rubber, low productivity of coffee yields and death of pepper due to high intensity of flooding leading to shift towards to oil palm and annual crops.
- Improvement of agroforestry rubber-coffee management is aimed at increasing their productivity.
- Rubber and coffee post-harvest handling conforms to market standards, fetching farmers a higher selling price.
- Training on good agriculture practices for rubber-coffee agroforestry and post-harvest handling techniques to ensure high-quality that meet market standards was delivered to farmer group.
- Farmer group initiate demoplot rubber-coffee agroforestry as a learning site



Rubber and coffee bean agroforestry design



- Rubber-coffee agroforestry demoplot was established on community-owned in peatland of 0.5 ha.
- Zero-burning technique applied on land preparation.
- Rubber trees are planted at spacing of 3 × 3 m. Coffee plants are then intercropped between rubber trees, also following a 3 × 3 m spacing pattern.

Business model for improving management of rubber-coffee agroforestry on peatlands

| Enabling factors | Key business activities | Supporting functions | Supporting organisations |
|--|--|---|---|
| <p>Production process</p> <ul style="list-style-type: none"> The Minister of Agriculture Regulation No. 131/Permentan/OT.140 /12/2013 on Guidelines for Rubber (Hevea brasiliensis) Cultivation The Minister of Agriculture Regulation No. 48/2014 on Technical Guidelines for Good Cultivation of Coffee The Minister of Agriculture Regulation No. 5/2018 on Land Clearing and/or Management Without Burning | <pre> graph TD A[Rubber-coffee agroforestry farmer group] --> B[Rubber] A --> C[Coffee] B --> D[Dry process for rubber latex in accordance with standards] D --> E[PT Bintang Borneo Persada (BBP)] C --> F[Wet processing] C --> G[Dry processing] F --> H[First quality coffee bean] H --> I[101 Coffee] G --> J[BUMDes or other business unit] J --> K[Collectors] </pre> | <ul style="list-style-type: none"> Rubber and coffee seedlings Production facilities and equipment Extension programmes, training, mentorship Financial institution | <ul style="list-style-type: none"> The Village Community Empowerment Office The Plantation and Livestock Office PT BBP 101 Coffee The Watershed and Protected Forest Management Centre |
| <p>Marketing</p> <ul style="list-style-type: none"> The Minister of Agriculture Regulation No. 52/2012 on Guidelines for Coffee Bean Post-Harvest Processing The Indonesia National Standard 2907 - 2008 on Coffee Bean | <ul style="list-style-type: none"> PT Bintang Borneo Persada (BBP) 101 Coffee Collectors | <ul style="list-style-type: none"> Transportation Financial institution Warehouse/storage Financial institution Information technology | <ul style="list-style-type: none"> PT BBP 101 Coffee |

Training programmes for farmer group



Training on good agriculture practices for rubber



Training on coffee bean post-harvest handling



Training on organic fertiliser making



Training on rubber post-harvest handling



Training on vegetative reproduction of rubber, coffee and fruit trees

Demoplot development activities



Land preparation



Stake installation



Seedling transportation

Adoption of training topic



A farmer is grafting rubber seedling in the plantation



Farmers implement the company's standards for rubber post-harvest handling

Rahayu S, Suyanto, Novia CY, Nafsiah N, Novianti L. 2024. *Business model for improving management of rubber-coffee agroforestry on peatlands in Bengkarek Village, Sungai Ambawang Subdistrict, Kubu Raya District, Bogor, Indonesia: World Agroforestry (ICRAF).*



Supported by:



Issued on the occasion of the German-Banarasing



INTERNATIONAL CLIMATE INITIATIVE

#PahlawanGambut
pahlawangambut.id

World Agroforestry (ICRAF) Indonesia Program

Jl. CIFOR, Situ Gede, Sindang Barang | Bogor 16115 [PO Box 161 Bogor 16001] Indonesia
Tel: +(62) 251 8625 415 ; Fax: +(62) 251 8625416 | Email: icraf-indonesia@cifor-icraf.org