



**MARS**



**#PekebunLestari**

[darikebunkelanskapsehat.id](https://darikebunkelanskapsehat.id)

# Sustainable Farming in Asian Tropical Landscapes (SFITAL)

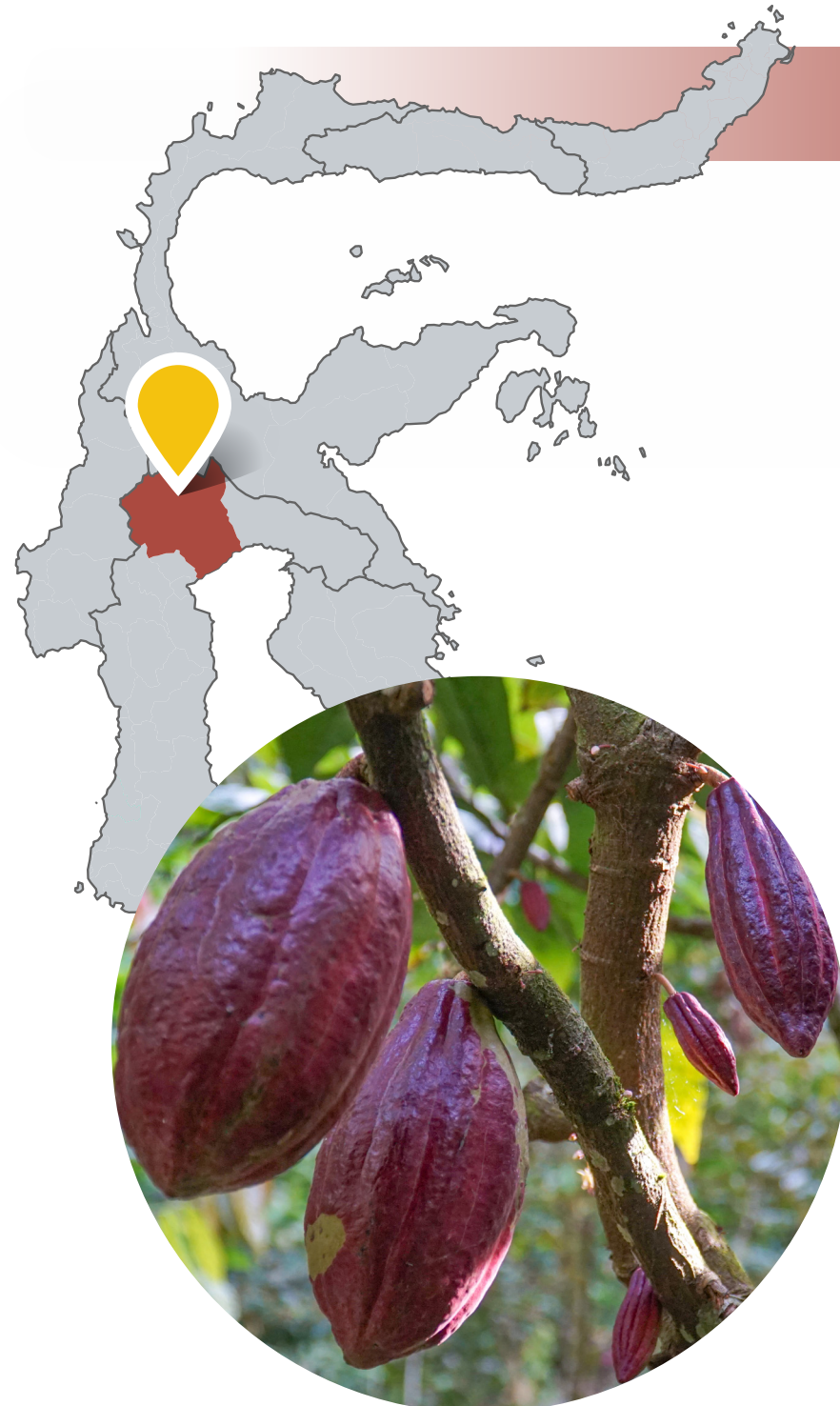
**Duration: 5 years, 3 months (July 2020 – September 2025)**

## Empowering Smallholder Farmers, Transforming Landscapes

The SFITAL Program (2020–2025) strengthens agroforestry practices, fostering farmer capacity, and building sustainable business models in North Luwu (South Sulawesi) for cacao and North Labuhanbatu (North Sumatra) for oil palm.



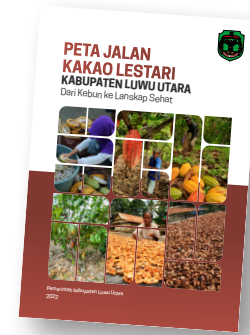
Agroforestry products from farmers supported through the program



© CIFOR-ICRAF Indonesia

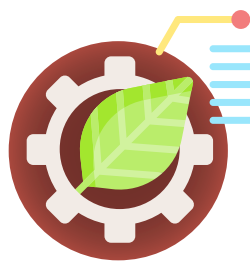
### NORTH LUWU: Advancing Sustainable Cacao

North Luwu, a key cacao-producing region in South Sulawesi, faces challenges such as declining productivity, soil degradation, pests, and competition from other commodities. To address this, the SFITAL initiative implements the Agroforestry Cacao Program, introducing innovative strategies to empower farmers and promote sustainable agricultural practices tailored to local needs for long-term impact.



#### Cacao Sustainability Roadmap

Officially legalized by District Head Regulation to ensure sustainable farming practices and supported by a digital monitoring and evaluation platform.

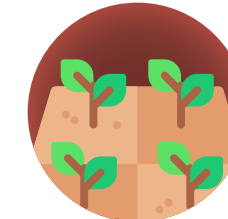


**2,100+ Farmers Trained**  
Across 5 districts in Good Agricultural Practices (GAP) and agroforestry management.



#### Integrated Financing Scheme

Aligning the cacao agroforestry roadmap with government financing programs.



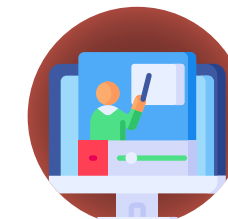
#### 5 Demonstration Plots

Hands-on learning sites for farmers.



#### 2 Business Models Developed

KUB Trigona Mantap for honey and KUB Aren Malimbu for Arenga Palm Sugar.



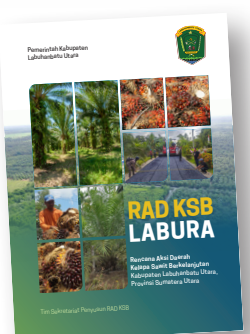
**Innovative Education**  
Cacao agroforestry curriculum and e-learning platform, to empower farmers and agricultural trainers.



© CIFOR-ICRAF Indonesia

### NORTH LABUHANBATU: Strengthening Sustainable Oil Palm

North Labuhanbatu is transforming its oil palm sector by promoting sustainable practices. Farmers are gaining skills in Good Agricultural Practices (GAP) and intercropping to enhance productivity while preserving the ecosystem. With SFITAL support, local stakeholders developed a District Action Plan to ensure resilience and economic stability. Collaboration with private companies and the government empowers farmers as economic drivers and environmental stewards, creating a model for sustainable oil palm production.

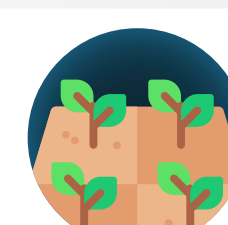


#### Sustainable Oil Palm Action Plan

Regional Action Plan (RAD-KSB) Legalized by District Head's Decree to guide responsible land management.



**800+ Farmers Trained**  
Across seven villages in GAP and sustainable oil palm management.



#### 14 Farmer Demonstration Trials

Showcasing best practices in intercropping models with oil palm.



#### Partnerships

Collaboration with MAFI and private sector for sustainable oil palm practices and organic fertilizer initiative.



#### Innovative Education

Published scientific journal and e-learning platform to support smallholder oil palm rejuvenation.

## National and Global Impact



**89% of SFITAL Indonesia Targets Achieved**



**Collaborations between CIFOR-ICRAF, Rainforest Alliance, Mars Inc., MAFI**



**SFITAL expands its efforts to Davao de Oro, Philippines** – land productivity and economic challenges through capacity-building, agroforestry innovations, and community-driven approaches.

Funded by: *International Fund for Agricultural Development (IFAD)*, the project targets to drive positive change in the production and management of two widely traded commodities to strengthen the sector's resilience.

### CIFOR-ICRAF Indonesia Program

The Center for International Forestry Research and World Agroforestry (CIFOR-ICRAF) harnesses the power of trees, forests and agroforestry landscapes to address the most pressing global challenges of our time – biodiversity loss, climate change, food security, livelihoods and inequity.

[www.cifor-icraf.org/locations/asia/indonesia/](http://www.cifor-icraf.org/locations/asia/indonesia/)

Discover more about  
**SFITAL** by scanning  
the QR code

