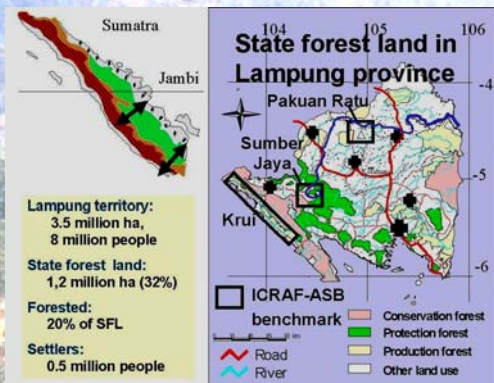


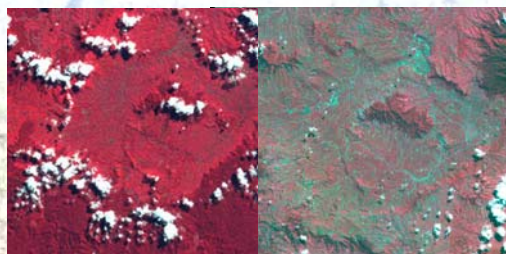
Negotiation support system for integrated natural resource management

Lampung, a province with a serious conflicts over "state forest land"

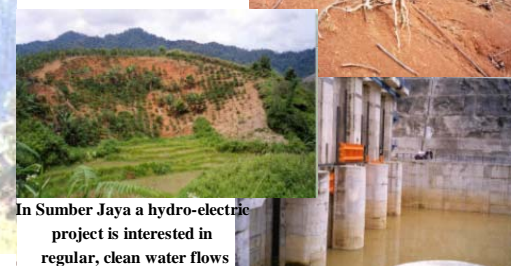


Sumberjaya, the head-waters of the Tulang Bawang river has lost much of its forest cover in the last 3 decades

Landsat MSS 1973 SPOT 1999



Erosion and sedimentation means loss of production in coffee, but gains in the rice field



NSS means starting from farmers' realities:

coffee + shade/fruit trees
 or
 monoculture - open coffee

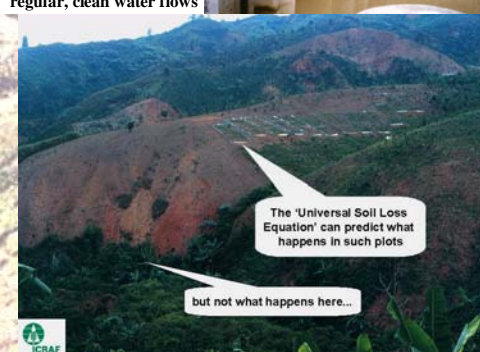
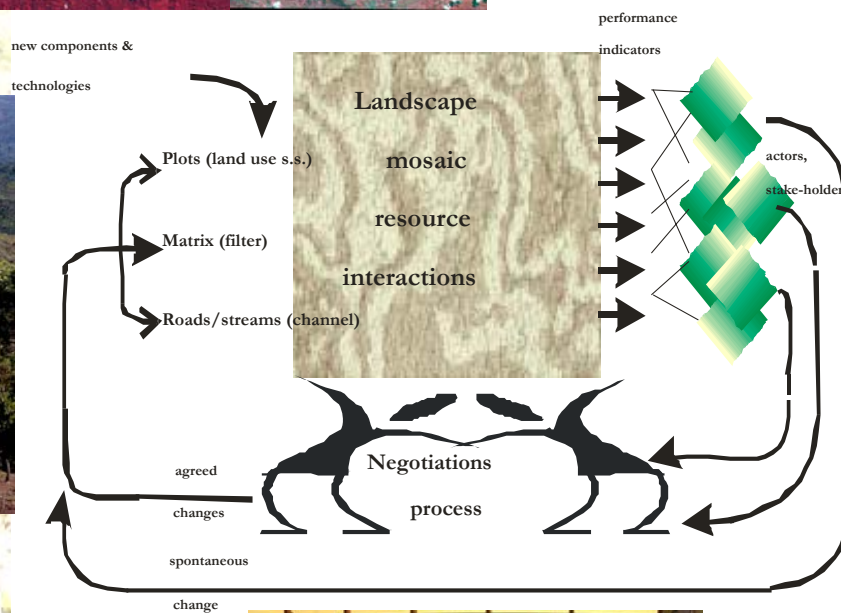


which system is the most profitable and sustainable?

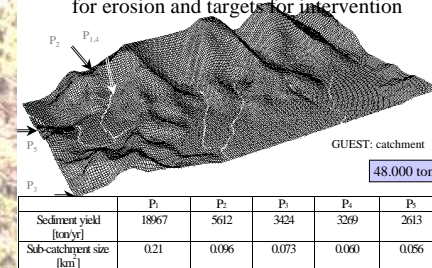
The damar agroforests of Krui started as open-field coffee with some shade-trees...



NSS means: getting local government and extension to listen to the farmers' story



Landscape-level models identify 'hot-spots' for erosion and targets for intervention



Negotiations between managers of state forest lands and farmers can hopefully lead to a healthy landscape without conflicts....