

South and Southeast Sulawesi, Indonesia

Annual Rainfall:
2000-4000 mm South Sulawesi
1600 mm Southeast Sulawesi

Tree cover transitions in space and time

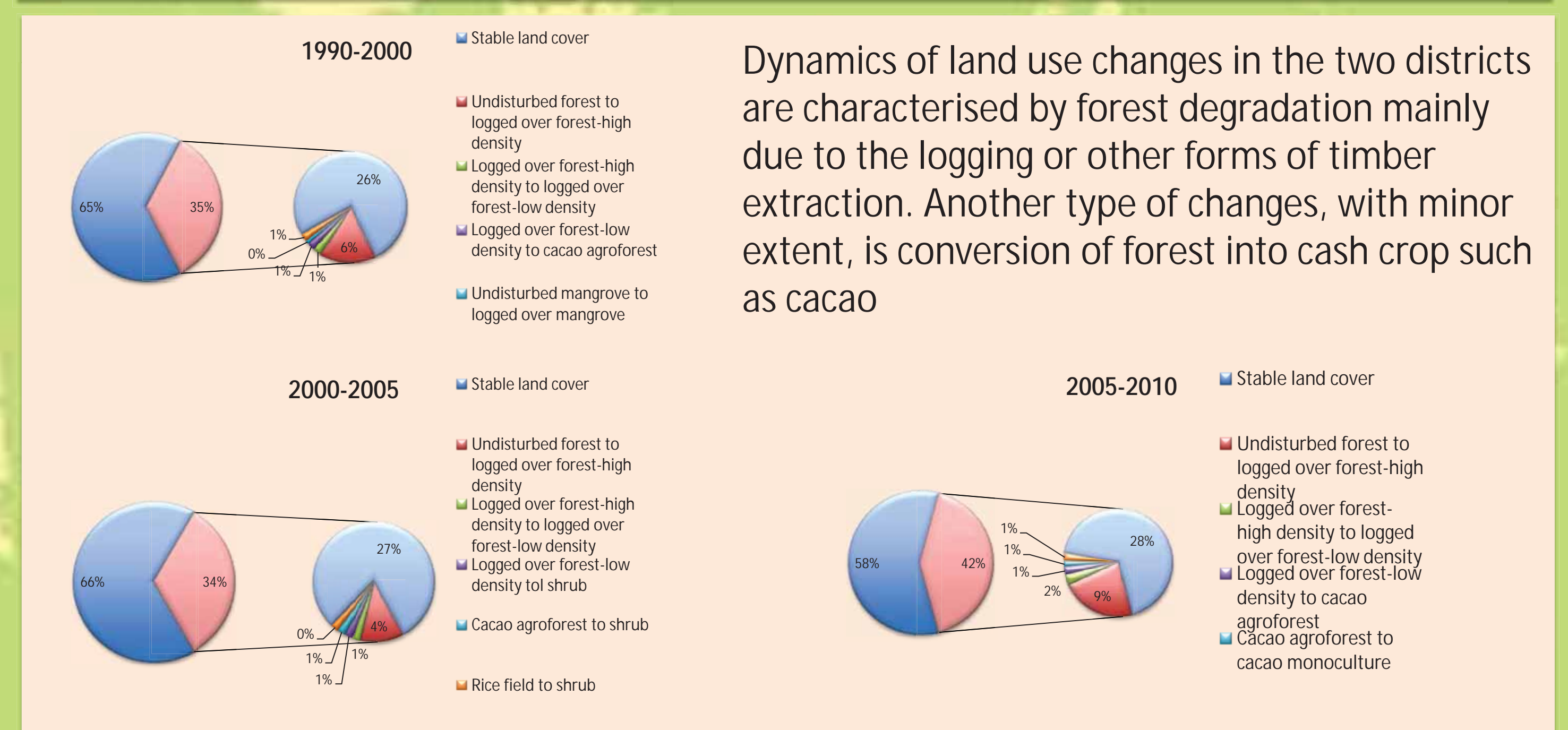
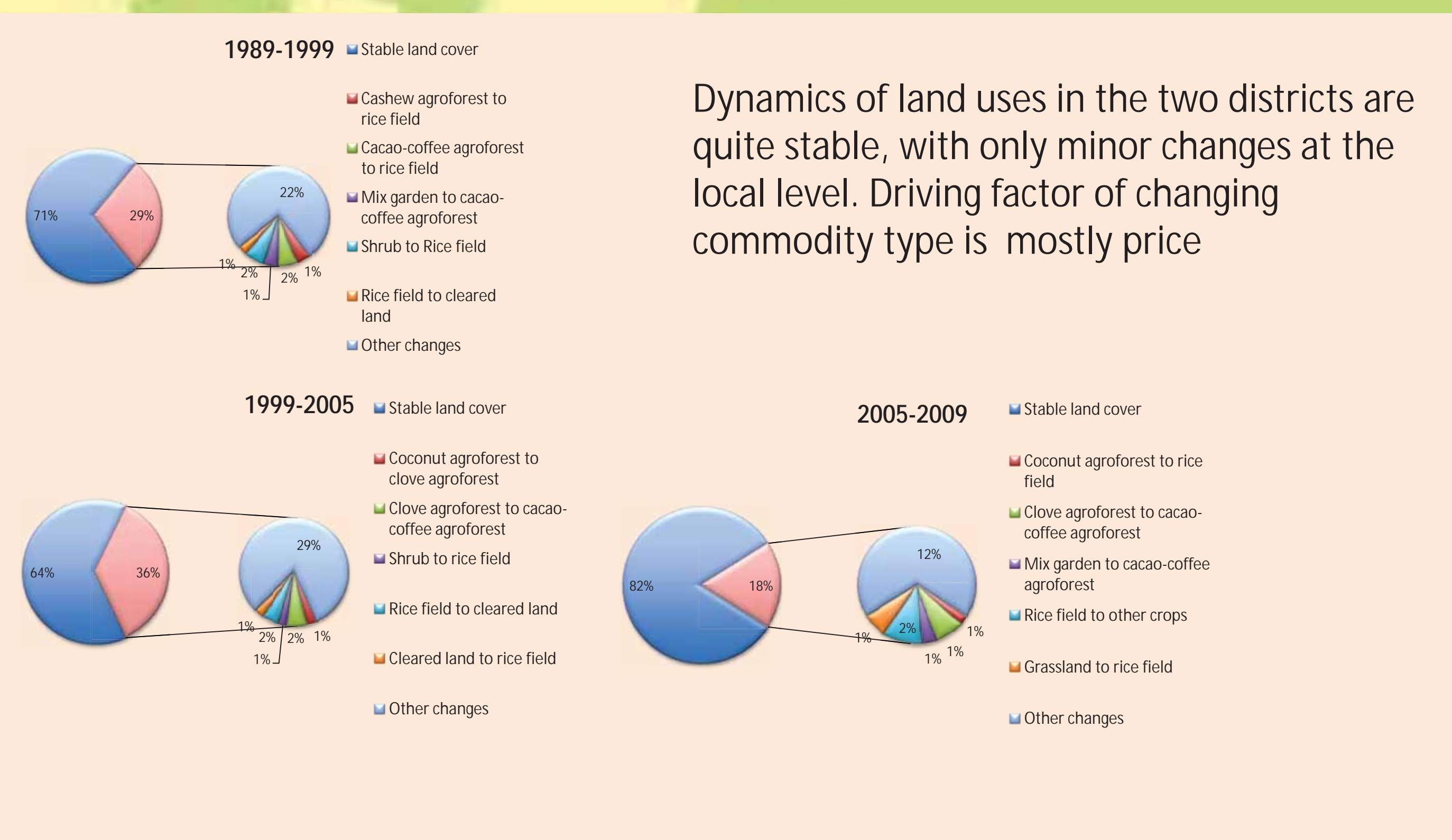
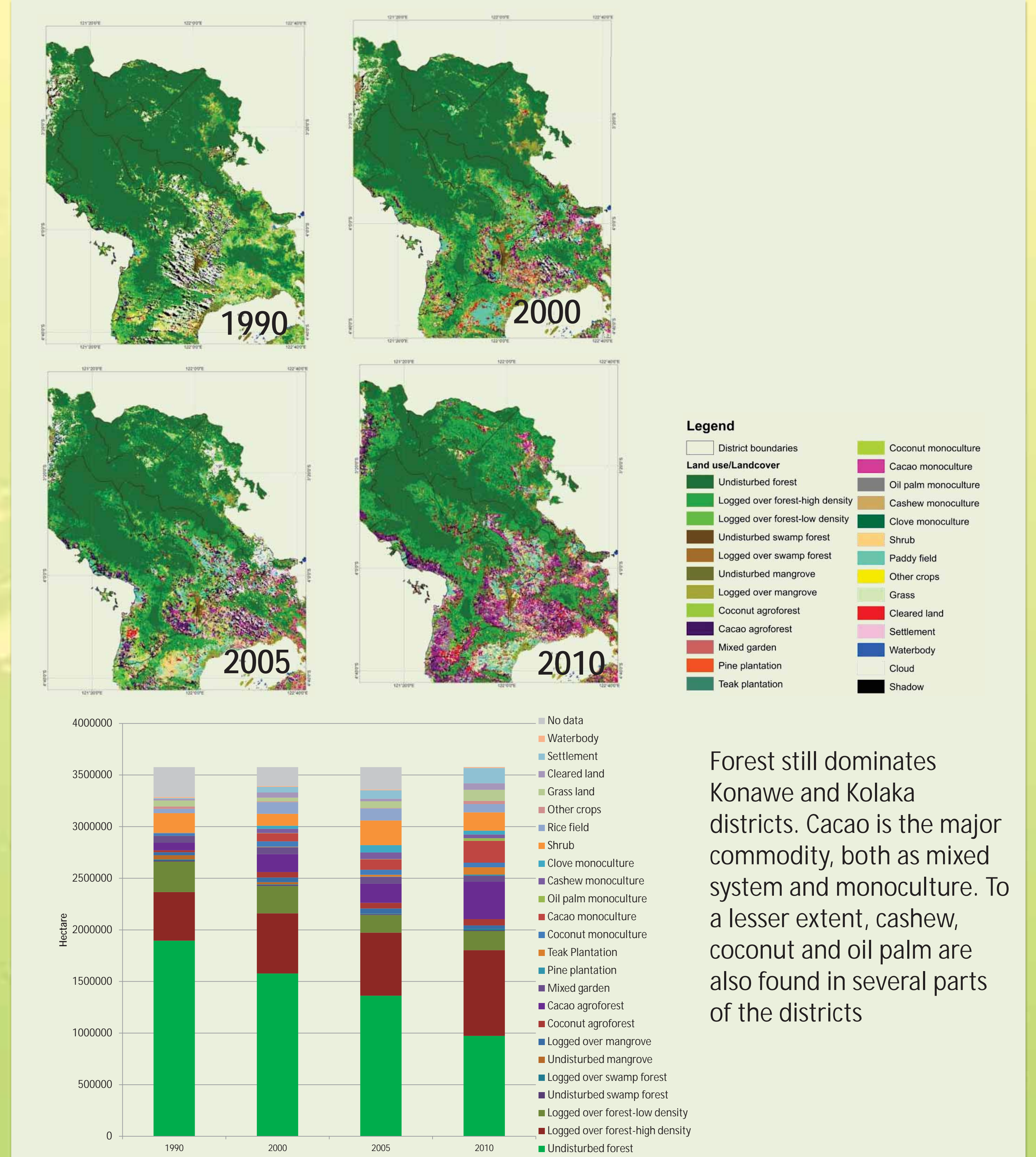
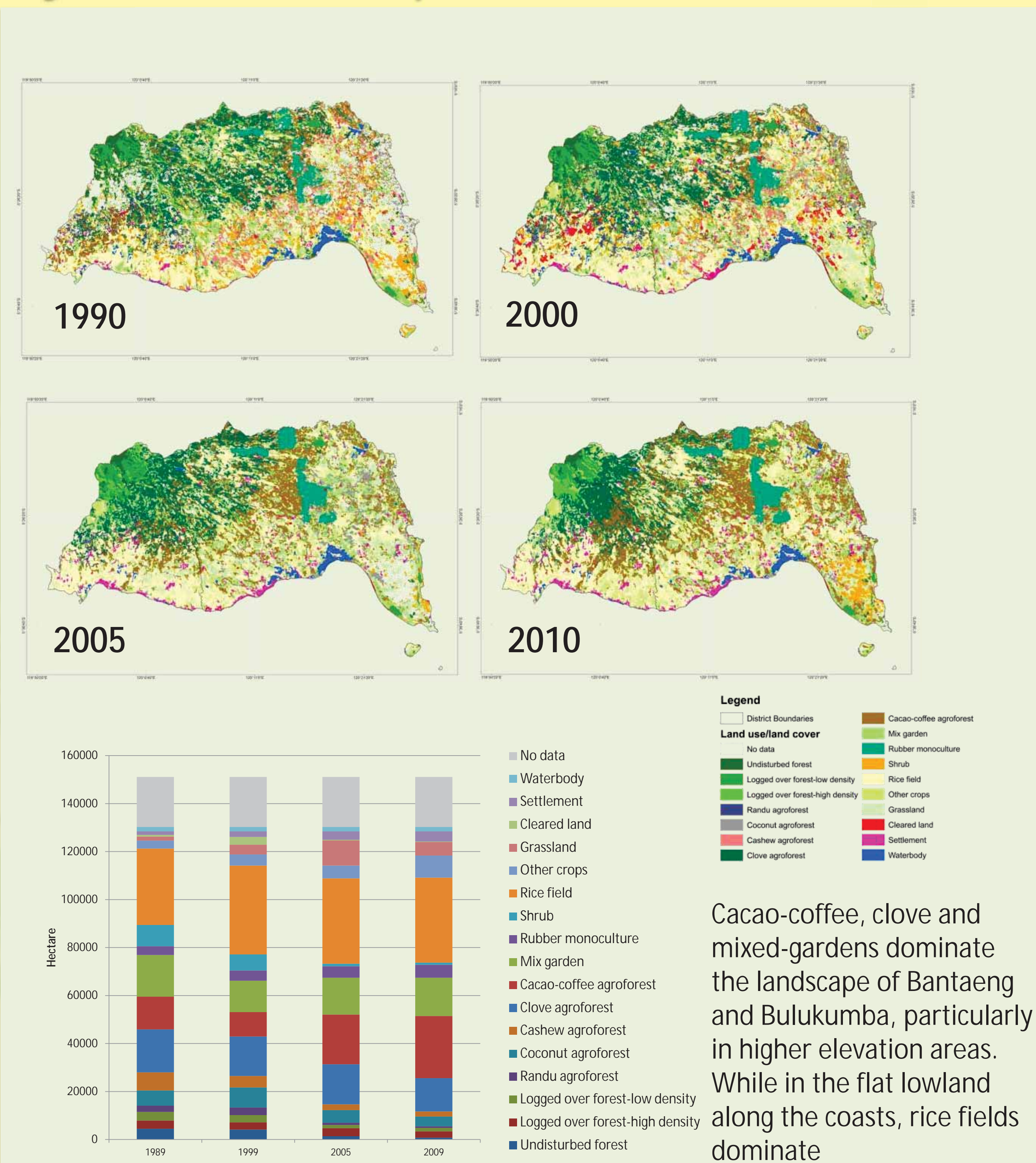
Trees and crops in Bantaeng-Bulukumba



Trees and crops in Kolaka-Konawe



Dynamics across space and time.....



Prepared by: Elissa Dwiyantri, Atiek Widayati

For further information please contact:
Atiek Widayati (a.widayati@cgiar.org)



World Agroforestry Centre Southeast Asia Regional Program
Jl. CIFOR, Situ Gede, Sindang Barang, Bogor 16115
P.O. Box 161, Bogor 16001 West Java, Indonesia
http://www.worldagroforestry.org/regions/southeast_asia