



# Who makes a living here?

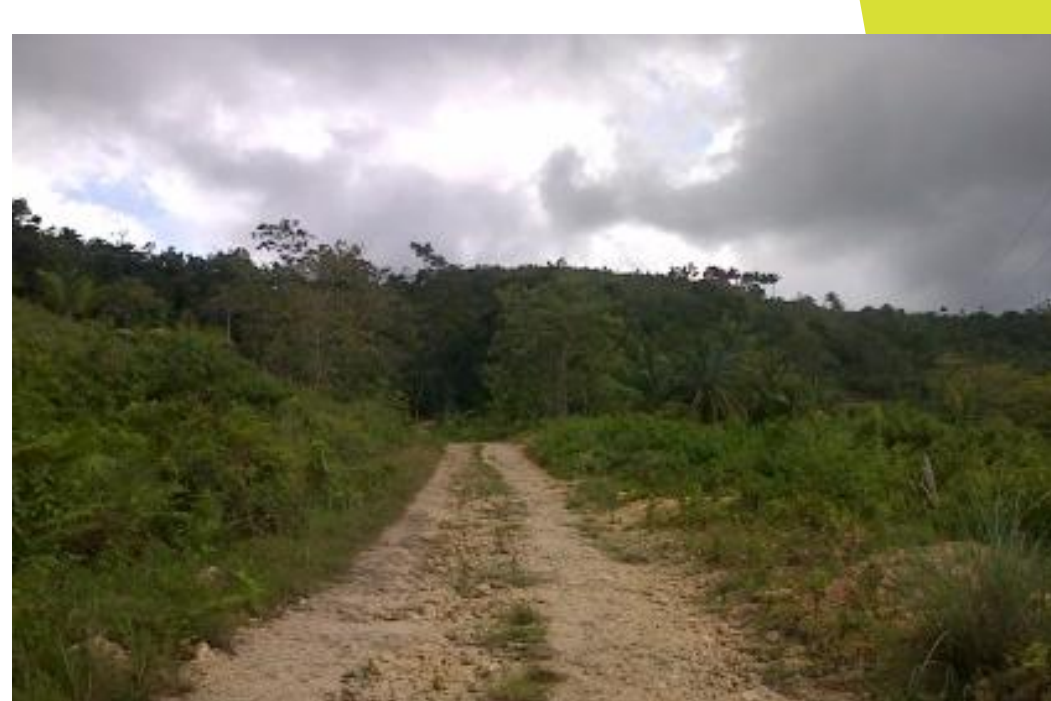
Wahig-Inabanga  
Watershed

SouthEast Asia  
Philippines

Mean annual  
Rainfall: ~2,000

## Upland Communities and People

- These people are considered some of the most marginalized communities which is largely due to the lack of accessible transportation and poor road conditions.
- Most family members have migrated to the city to be able to find alternative livelihoods. Only a few have remained to tend to the farms. Most farms in the uplands are for subsistence farming rather than a main source of livelihood.
- The development of ecotourism has increased the potential of communities to earn more through potential employment with private and government agencies.



*Eskaya* people are recognized under the Indigenous People Rights Act. And later was awarded a certificate of Ancestral Domain of Villages of Canta-ub of Sierra Bullones, Lundag of Pilar, Cadapdapan-Tambongan and Fatimah of Candijay Bohol in 1996.

INDIGENOUS PEOPLE

## Low-Land Communities and People

- The rolling lowlands are native to the area (66.67%) where the traditional farming practice is still handed down from parent to child.
- Younger generations have moved to find employment as labourers in the or transportation or tourism industry.
- Low lying communities predominantly practice monoculture of rice and alternate with corn. On the occasion of calamities, root crops such as *ube* (*Dioscorea alata*) are their alternative crop.
- Alongside rice, small-scale palm oil farms have started to spread in the lowlands. Although not wide spread, there is a considerable rise in the number of farmed palm oil on private lands.



Majority of farming households have trees on farm (84.52%), with 12.93% practicing agroforestry. More female farmers (13.81%) practice agroforestry compared to male. On the other hand, there are more male farmers (88.97%) have trees on farm than female farmers (79.85%).

GENDER APPRECIATION

Photo Credits: Mick Phansione, 2011

Sustainable Development

Agroforestry...The Change we want!